

# PowerGen 10000

## DC Generator



### Description

Delta PowerGen 10 kW is an outdoor -48VDC standby generator designed to support telecommunications network power through extended utility power outages. Using a lightweight, air cooled engine, it's installation and deployment is quicker, easier and less costly than a traditional AC generator. Its availability can be assured through remote web browser access as well as M2M automation using SNMP alarms, polling and exercise.

### Main features

- Available in 10kW, 52VDC, positive ground.
- Easy installation and maintenance.
- Delivered to a roof by elevator and stairs. Low weight minimizes civil costs.
- DC output design reduces space requirements for generator and large batteries. Increases efficiency and reliability over an AC generator.
- 9-phase alternator and extensive LC filtering for clean output.
- Connects directly to DC plant with no need for a transfer switch or any AC power modifications.
- Diffused and diluted exhaust without any hot surfaces. Cabinet is safe to touch.
- Easy Integration with renewable energy systems.
- Automatic operation, triggered on loss of AC utility power digital input and/or and battery voltage thresholds.
- WEB browser interface for programming, control, monitoring, and firmware updates.
- SNMP Traps containing configurable alarm names and severities to respect Control Center standards. Generous alarm contacts are provided for traditional monitoring.
- Safe Voltages for Telco Network Power Technicians troubleshooting.

### Applications

Roof top base stations  
Walk-In Cabinets  
Multi-day backup

Cell sites  
Data communications  
Minimize battery investment

Land Mobile towers  
CATV Cabinets  
Eliminate civil costs for battery floor  
reinforcements



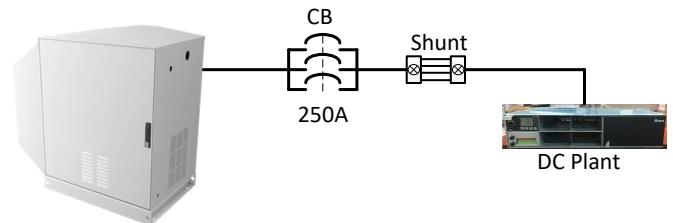
# PowerGen 10000

## DC Generator

### Technical specifications

1. General		
1.1	Rated Power	10.0kW
1.2	Nominal Output Volt	52V <sub>DC</sub> (Configurable 48 – 54 V <sub>DC</sub> )
1.3	Engine Type	Air Cooled – Kohler CH740 series
1.4	Fuel Consumption 100% load	LPG: 9.48 lbs/h NG : 8.88 lbs/h
1.5	Volt Regulation	+/-1%
1.6	Ripple Volt	500mV
1.7	Dimensions (W x H x D)	1155 x 1155 x 770 mm (45.5" x 45.5" x 30.3")
1.8	Weight	227 kg (<500 lbs.)
1.9	Operating Temperature	-30°C to +50°C (-34°F to +122°F)
1.10	Acoustics	≤ 65dBA @ 23ft (7m)
1.11	User Interface	LCD Interface, LED Indication Alarm Dry Contacts, WEB GUI
1.12	Function	Alarm renaming, configurable severity, cycling exercise self- test, auto start based on loss of AC or low battery voltage. Local manual/Off mode Generator DC output energy meter, engine run hour meter, and engine start counters.
1.13	M2M and alarm Interface	Alarm Dry Contacts, Radius, SNMP Alarm and Status Traps, extensive polling.

### System wiring



Typical Installation

2. Standards		
2.1	Safety	UL/cUL
2.2	EMI (radiated/conducted)	FCC Part 15 Class A and ICES-003
2.3	Environment	RoHS compliant

3. Order Information		
3.1	Part Number	ESOG193-CCA01

4. North America Sales Contact		
4.1	Jason Li	Email: <a href="mailto:jason.li@deltaww.com">jason.li@deltaww.com</a> TEL: 1-647-209-3401

All specifications are subject to change without prior notice.

#### DELTA ELECTRONICS, INC.

3 Tungyuan Road, Chungli Industrial Zone,  
Taoyuan City 32063, Taiwan.  
TEL : +886-3-452-6107 FAX : +886-3-452-7314  
Fact\_sheet\_PowerGen-10000-48DC\_en\_rev02  
[www.deltaww.com](http://www.deltaww.com)

